

DOKUMENTUMOK A LEVÉLTÁR ANYAGÁBÓL

A Michigani Egyetem európai tanulmányútjának hirdetője 1936-ból

Az úti programok között szerepel a TF meglátogatása is, amelynek könyvtárát a létező legteljesebb testnevelési gyűjteménynek nevezi a nyomtatvány. (Szukováthy Imre, a TF egykori igazgatójának levelezéséből.)



DOKUMENTUMOK A LEVÉLTÁR ANYAGÁBÓL

A Michigani Egyetem európai tanulmányútjának hirdetője 1936-ból

• • • *The Course of Study* • • •

Explanation.—This course of study is designed for graduate students in education. It will devote especial attention to the fields of physical education, health, recreation, youth movements, adult education, and university life. These activities will be studied in their relationship to the social, cultural, and political background of the various countries to be visited.

Leadership.—The group will be under the supervision of Professor Elmer D. Mitchell of the staff of the School of Education, who has had wide practical experience as a physical educator, teacher, athletic coach, intramural director, and director of playgrounds and camps. He is the author of the *Theory of Play, Intramural Athletics, Social Games for Recreation, and Active Games and Contests.*

Credit.—Six hours of graduate credit will be granted for completing the study tour, including the various special assignments given by the instructor. Students may, however, enroll for two or four hours credit if they prefer such an arrangement, and their academic load will be lightened accordingly. Parents, relatives, or friends of enrolled graduate students may accompany them on the trip without payment of the Summer Session fee.

Expenses.—The cost of the trip, New York City and return, will be \$491, traveling third class on the ocean. This sum will be all-inclusive with a few exceptions such as American passport, tips aboard ship, tickets to the Olympic Games, laundry, and any personal purchases. This low cost is made possible by the fact that the members of the group will be housed at student lodgings during their stay at Oetz, Prague, Berlin, and Lund.

Summer Session Fee.—The students enrolling for credit will pay the regular Summer Session fee of \$34 in addition to the cost of the trip. Graduate students enroll-

ing in the University for the first time will also be required to pay a summer matriculation fee of \$5 in addition to the regular Summer Session fee. See paragraph entitled "Further Information" on the last page.

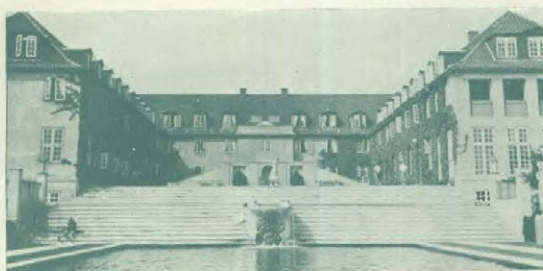
Study Procedures.—Prior to the trip, each student will be provided with a list of recommended readings in books and current magazines. The purpose of these readings will be to orient the student so far as possible to the European situation in general, and also to emphasize the traditional features of each country's unique program of health, gymnastics, sports, folk dances, and recreation. It is planned to place particular stress upon the innovations that have taken place in these programs since the World War and especially upon recent social developments in the way of youth organizations, vocational centers, and adult education.

On board ship on the outward voyage, the reading material just described will be discussed. The students will be advised to keep a notebook or log giving a critical analysis of the places visited, the educational movements studied, and the special lectures attended.

The regular classes will be held on the boat during morning periods, in general from 9 to 12 A.M. This class discussion will be supplemented with practice in social recreation leadership methods and with special conference groups.

The trips through the foreign countries will follow in general the itinerary already given. At Oetz, Austria, there will be an eight-day stay under the hospitality of the American Peoples College in Europe. Here lecturers and students from several countries will meet. An exchange of lectures will be made.

En route to America summaries of the study tour will be presented. Attention will be given to features of the European programs which have a worth-while significance for the progressive developments in America. Students will also report on the special projects which they have chosen for consideration.



THE FAMOUS NIELS BUEH FOLK SCHOOL AT OLLERUP, DENMARK
GYMNASIUM AND OUTDOOR SWIMMING POOL



FRIEZE OF LIVING FIGURES IN HUGE SOKOL
FESTIVAL AT PRAGUE

DOKUMENTUMOK A LEVÉLTÁR ANYAGÁBÓL


A Michigani Egyetem európai tanulmányútjának hirdetőménye 1936-ból

The Course of Travel

The Trip.—Eight countries will be visited. These are France, Germany, Austria, Hungary, Czechoslovakia, Denmark, Sweden, and England. Special side trips at extra expense may be arranged to Switzerland, Italy, Poland, Finland, and Russia.

The Itinerary.—The trip will cover a period of 65 days or a total of nine weeks, extending from June 27 to September 1. The tentative itinerary is given below. Slight changes may be made if found to be of advantage to the general interests of the group.

The Olympic Games.—The attendance at the Olympic Games will be voluntary. Special events at this time which will be of import are the opening ceremonies on August 1; the Dance Festival the same evening with such famed artists as Mary Wigman and Kreutzberg participating; the track events continuing from August 1 to 8; the mass demonstrations of Swedish, German and Sokol Gymnastics on August 9 and 10; and the numerous international conferences listed later. During the same period, visits may be made to the galleries, where special competitions in painting, sculpture, music, and drama are being held in honor of the XI Olympiad.



The admission fees for the Olympic Games are payable in Reichsmarks at the regular rate of exchange only. The stay of the study tour is planned to include the principal days of the Games. The following brief information on fees will suffice for general purposes.

	Reichsmarks		
	1st Class	2d Class	3d Class
Season ticket, light athletics	40	30	20
Single ticket on principal days	10	6	4
Single ticket on other days	6	4	2

The complete schedule of Olympic events and admission fees will be sent upon request.

THE ITINERARY

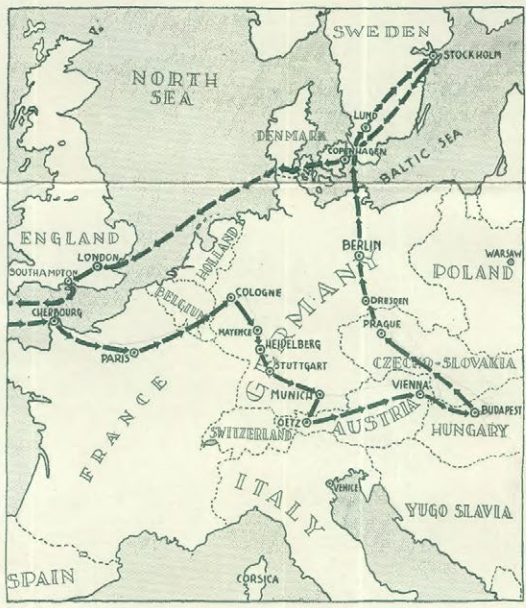
Eight Countries—\$491

June 27	Sail from New York on SS AQUITANIA (Cunard White Star Line)
July 3	Due Cherbourg, France. Train to Paris
4-6	Paris. Excursion to Versailles
7	To Cologne, Germany
8	Rhine steamer to Mainz
9-10	Heidelberg
10-13	Munich
13-20	Oetz in Tyrol—The American Peoples College in Europe
20-23	Vienna, Austria
23-26	Budapest, Hungary
26-30	Prague, Czechoslovakia
30-31	Dresden, Germany
31	Evening to Berlin
Aug. 1-10	Berlin during the 1936 Olympiad
11	To Lund, Sweden
12-14	Lund. Noncredit students will spend this time at a country estate at Maglo, Sweden
15	To Stockholm
16-17	Stockholm
17	Night train to Copenhagen, Denmark
18-20	Copenhagen
21	Leave for England
22	Evening. Arrive in London
23-25	London
26	To Southampton. Sail on SS AQUITANIA
Sept. 1	Due New York City

OPTIONAL SIDE TRIP TO SOVIET RUSSIA

Extra cost—\$85

Aug. 4	Evening train to Poland
5	Warsaw
6	Train to U S S R
7-11	Moscow
12-14	Leningrad
15	Helsinki, Finland
16	Rejoin group in Stockholm



MAP SHOWING ITINERARY AND IMPORTANT CENTERS TO BE VISITED

6/1/84

DOKUMENTUMOK A LEVÉLTÁR ANYAGÁBÓL

A Michigani Egyetem európai tanulmányútjának hirdetőménye 1936-ból

Special Features

The European Study Tour of Physical Education and Related Fields will have some features of special significance to graduate students in education apart from the general visitations that are to be made. The outstanding features of the tour are therefore here enumerated with mention also of some additional matters of significance:

1. Class discussion and study projects leading to two, four, or six hours credit
2. Travel through eight countries
3. Exchange of students and professors at American Peoples College
4. Opportunity to meet leading physical education authorities of international reputation
5. Study of health, physical education, sports, recreation, vocational education, youth movements, adult education, children's hospitals, as found abroad
6. Opportunity to witness the Olympic Games
7. Opportunity to attend International Conferences in Berlin—
International Congress on Hygiene
International Congress on Physical Education
International Youth Conference
Special art exhibits
Special dance festivals
Special gymnastic demonstrations
8. Opportunity to visit centers of historic interest—
Hygiene Museum at Dresden (most famous in the world)
Royal Hungarian College of Physical Education at Budapest
(most complete physical education library in existence)
Deutsches Hochschule fur Leibesubungen, Berlin
Sokolsky Domov, Headquarters of Sokol gymnastics movement in Prague
The famous Niels Bukh Folk School at Ollerup, Denmark
State Institute for Gymnastics, Copenhagen (oldest teacher-training institution in the world)
Southern Swedish Institute for Gymnastics
Cathedral School, Stockholm (where Ling first worked out his theories of medical gymnastics)
Famous parks and playgrounds
English teacher-training methods at English-Scandinavian School of Physical Education, London



PEASANT GIRLS OF HUNGARY, IN NATIVE COSTUME

Recreation.—Emphasis is also laid on having a good time according to group and individual wishes. This may mean the Opera or Montmartre in Paris, mountain climbing in Tyrol, going to coffee houses or light opera in Vienna, gypsy music in Budapest, cafés in Prague, rathskellers in Germany, Finnish baths in Scandinavia, bicycling or eating Danish pastries in Copenhagen, idling away a tea hour in London, and so on.

And there is always the opportunity to watch the great human pageant in eight countries abroad and to slip off for private expeditions and shopping trips.

Further Information.—Candidates for the trip may pay the Summer Session fee of \$34 any time prior to June 15, 1936. Make checks payable to the University of Michigan and mail to the Office of the Summer Session, University of Michigan, Ann Arbor, Michigan. It cannot be too strongly emphasized, however, that students should make *early* application for the trip in order that various arrangements for ship reservations and requests for tickets for the Olympic Games may be assured.

For further information or enrollment, address—

!!!
OFFICE OF THE SUMMER SESSION
UNIVERSITY OF MICHIGAN
ANN ARBOR, MICHIGAN



VILLAGE FOLK FESTIVAL AT NAAS, SWEDEN